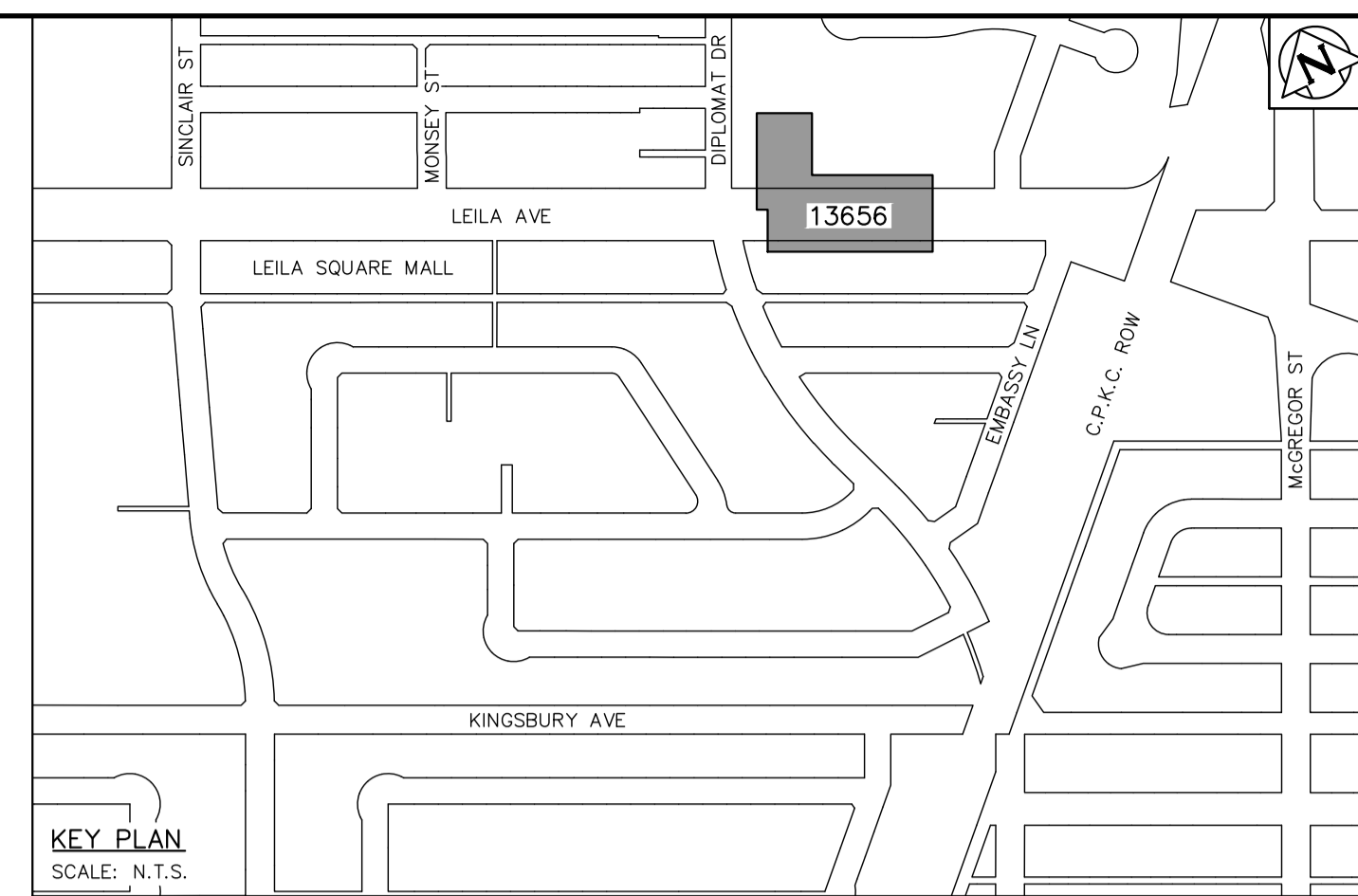
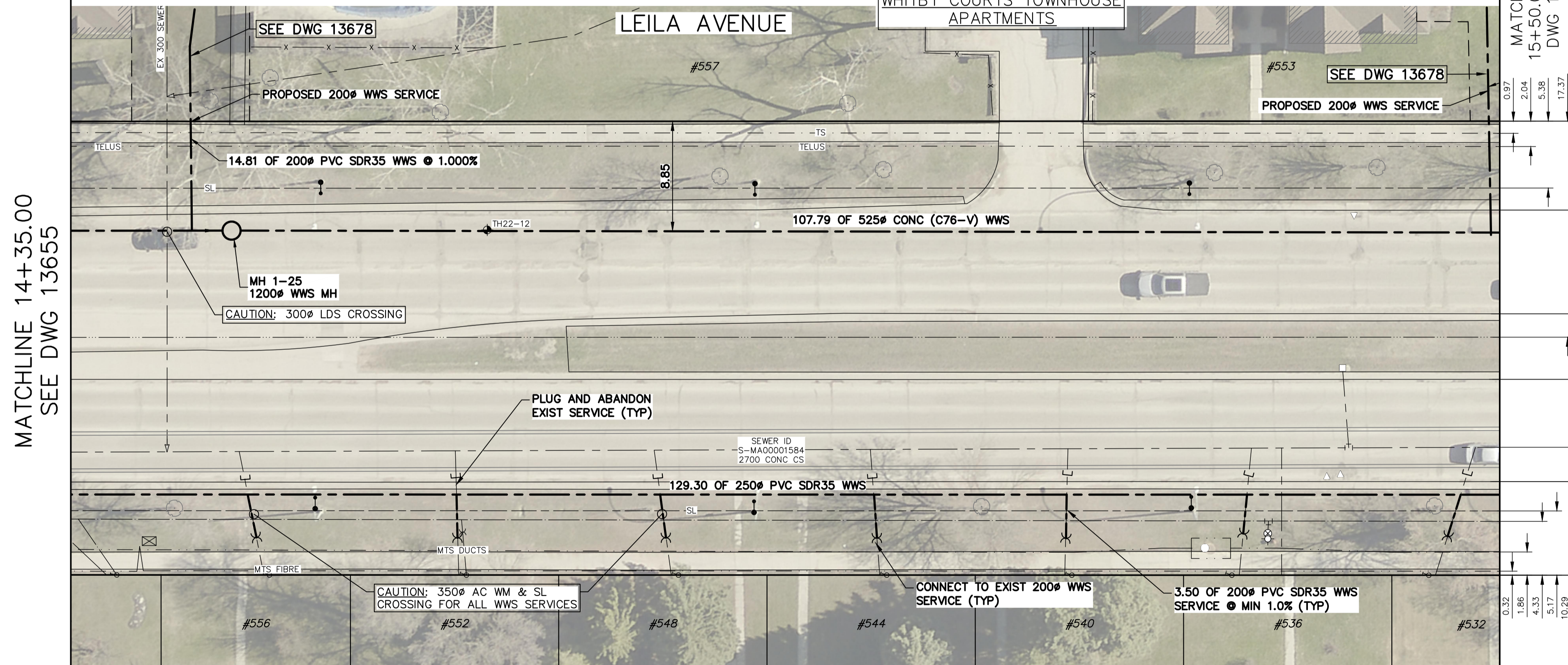


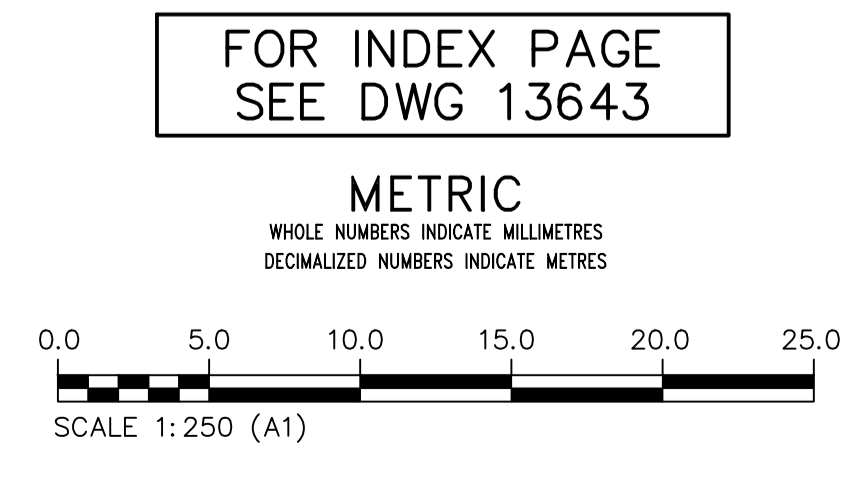
NOTE: CHAINAGES SHOWN ALONG S R OF LEILA AVENUE



- NOTES:**
- WHEN INSTALLING PROPOSED WASTEWATER SEWERS ON LEILA AVE TAKE CAUTION WHEN CROSSING EXISTING RESIDENTIAL WATER SERVICES.
  - CONTRACTOR SHALL VERIFY ELEVATION OF EXISTING SEWER SERVICES AT PROPOSED DOWNSTREAM CONNECTION LOCATIONS PRIOR TO INSTALLATION OF COLLECTOR WWS TO ALLOW FOR CHANGES OF GRADE TO THE COLLECTOR WWS.

SEWER SERVICE INFORMATION					
ADDRESS	STATUS	SIZE (mm)	COORDINATES AT JUNCTION	COORDINATES AT PROPERTY	REMARKS
#532 LEILA AVE	ACTIVE	200	N=5534468.22 E=634205.30	N=5534460.27 E=634198.02	NONE
#536 LEILA AVE	ACTIVE	200	N=5534474.78 E=634191.16	UNKNOWN	NONE
#536 LEILA AVE	ACTIVE	150	N=5534479.81 E=634188.95	N=5534466.98 E=634183.72	NONE
-	ACTIVE	150	N=5534477.99 E=634184.28	UNKNOWN	MTS MH DRAIN?
#540 LEILA AVE	ACTIVE	200	N=5534482.03 E=634175.55	N=5534472.94 E=634171.01	NONE
#544 LEILA AVE	ACTIVE	200	N=5534488.73 E=634161.13	N=5534479.26 E=634157.52	NONE
#548 LEILA AVE	ACTIVE	200	N=5534496.06 E=634145.35	N=5534486.38 E=634142.34	NONE
#552 LEILA AVE	ACTIVE	200	N=5534502.80 E=634130.84	N=5534493.64 E=634126.85	NONE
#556 LEILA AVE	ACTIVE	200	N=5534510.12 E=634115.06	N=5534500.29 E=634112.65	NONE
#557 LEILA AVE	ACTIVE	200	N=5534511.31 E=634112.52	UNKNOWN	NONE

SEWER JUNCTION INFORMATION FROM SEWER VIDEO INSPECTION		
SEWER ID S-MA00001584		
DISTANCE FROM MH ID S-MH00001331		
DISTANCE	DIAMETER	CLOCK
38.4	200	11
41.2	200	2
58.6	200	2
74.6	200	2
92.0	200	2
107.9	200	2
117.5	150	1
122.5	150	1
125.1	200	2
130.5	300	11
140.7	200	2



**WARNING**

IF POWER EQUIPMENT OR EXPLOSIVES ARE TO BE USED FOR EXCAVATION ON THIS PROJECT THE CONTRACTOR MUST:

- NOTIFY THE GAS COMPANY OF THE PROPOSED LOCATION OF EXCAVATION.
- TAKE PRECAUTION TO AVOID DAMAGE TO GAS COMPANY INSTALLATIONS.

SEE PROVINCIAL REGULATION 210/72 FOR DETAILS

**LOCATION APPROVED UNDERGROUND STRUCTURES**

SUPV. U/G STRUCTURES COMMITTEE DATE

NOTE:

LOCATION OF UNDERGROUND STRUCTURES AS SHOWN ARE BASED ON THE BEST INFORMATION AVAILABLE BUT NO GUARANTEE IS GIVEN THAT ALL EXISTING UTILITIES ARE SHOWN OR THAT THE GIVEN LOCATIONS ARE EXACT. CONFIRMATION OF EXISTENCE AND EXACT LOCATION OF ALL SERVICES MUST BE OBTAINED FROM THE INDIVIDUAL UTILITIES BEFORE PROCEEDING WITH CONSTRUCTION.

VERTICAL DATUM: CGVD28 (HT2.0 Geoid)	
HORIZONTAL DATUM: NAD83 (June 1990), Zone 14	
DESIGNED BY	MID
CHECKED BY	TLE
DRAWN BY	GEL
APPROVED BY	RBO
SCALE:	
HORIZONTAL	1:250
VERTICAL	1:50
ISSUED FOR CONSTRUCTION	2026/03/10
DATE	MID
REVISIONS	BY

**KGS GROUP**

DESIGNED BY: MID

CHECKED BY: TLE

DRAWN BY: GEL

APPROVED BY: RBO

SCALE: HORIZONTAL 1:250, VERTICAL 1:50

RELEASED FOR CONSTRUCTION

DUANE BAKER

DATE: 2026/03/12

ENGINEER'S SEAL

ORIGINAL DRAWING SEALED BY: M.A. IANKOVA-DEDOVA 2026/03/11

CONSULTANT DRAWING NUMBER: C1-15

**THE CITY OF WINNIPEG**

WATER AND WASTE DEPARTMENT

ENGINEERING SERVICES DIVISION

ARMSTRONG SEWER RELIEF WORKS

CONTRACT 1

LEILA AVENUE

25.3 E OF DIPLOMAT DRIVE TO 43.1 W OF AMBASSADOR ROW

SHEET 15 OF 46

CITY DRAWING NUMBER: 13656